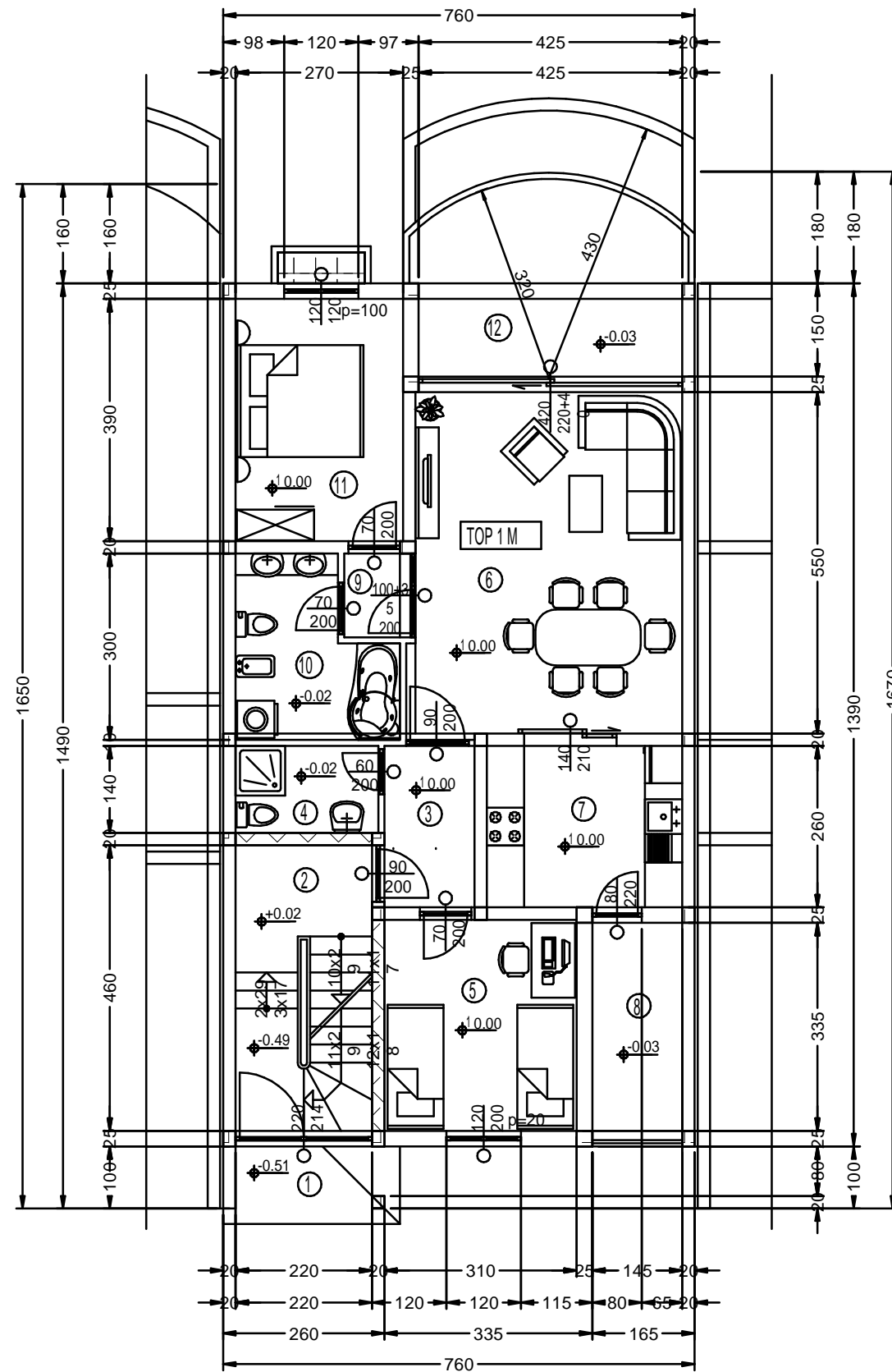


# APARTMENT TOP 1 - GROUND FLOOR "HOUSE M" - PINK

## RASPORED PROSTORA - TOP 1 / M



### ZAJEDNIČKI PROSTORI:

1. NATKRIVENI ULAZ	kamen	2.40m <sup>2</sup>	*0.50
2. STUBIŠTE	kamen	10.96m <sup>2</sup>	

### STAN 1:

3. HODNIK	keramika	3.77m <sup>2</sup>	
4. KUPAONICA	keramika	3.22m <sup>2</sup>	
5. DJEČJA SOBA	parket	10.54m <sup>2</sup>	
6. DNEVNI BORAVAK	parket	23.84m <sup>2</sup>	
7. KUHINJA	keramika	8.19m <sup>2</sup>	
8. LOGGIA	karamika	5.08m <sup>2</sup>	*0.75
9. PREDSOBLJE	parket	1.54m <sup>2</sup>	
10. KUPAONICA	keramika	6.50m <sup>2</sup>	
11. SPAVAĆA SOBA	parket	10.53m <sup>2</sup>	
12. TERASA	keramika	6.38m <sup>2</sup>	*0.75
		6.28m <sup>2</sup>	*0.50

a, UKUPNO STAN TOP 1 / M: 85.87m<sup>2</sup>

b, KORISNO STAN TOP 1 / M: 79.87m<sup>2</sup>

c, KORISNO ZAJEDNIČKI PROSTORI: 12.16m<sup>2</sup>

d, KANTINA TOP 1 / M: 32.99m<sup>2</sup>

e, SVE UKUPNO: 125.02m<sup>2</sup>

Netto korisne površine umanjene su za 3  $\frac{1}{2}$  prema HRN U.C2 100.

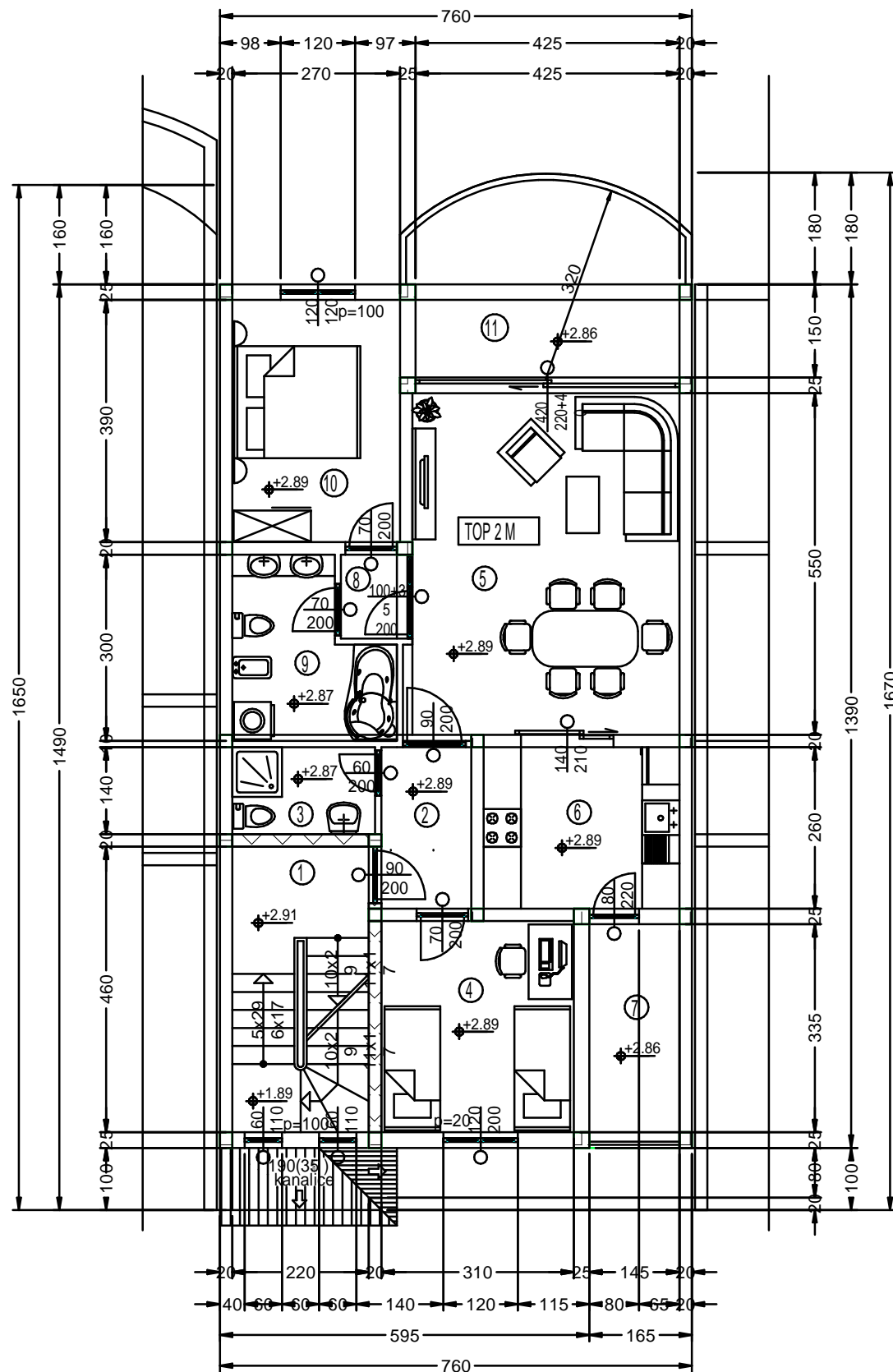
f, + 1/6 BAZEN I VRT  
g, + 1 PARKIRNO MJESTO

**Σ: 225.032,- €**

1. HAUPTINGANG	1. MAIN ENTRANCE
2. STIEGENHAUS	2. STAIRCASE
3. VORZIMMER	3. HALL
4. BAD	4. BATH
5. KINDERZIMMER	5. ROOM
6. WOHNZIMMER	6. LIVING ROOM
7. KÜCHE	7. KITCHEN
8. LOGGIA	8. LOGGIA
9. VORRAUM	9. VESTIBULE
10. BAD	10. BATH
11. SCHLAFZIMMER	11. BEDROOM
12. TERRASSE	12. TERRACE
a, GESAMMTFLÄCHE TOP 1 / M	a, TOTAL AREA TOP 1 / M
b, NETTO FLÄCHE TOP 1 / M	b, NETTO TOTAL AREA TOP 1 / M
c, ALLGEMEINFLÄCHE NETTO	c, NETTO COMMON AREA
d, KELLER TOP 1 / M	d, BASEMENT TOP 1 / M
e, GESAMMTFLÄCHE	e, TOTAL AREA
f, + 1/6 POOL UND GARTEN	f, + 1/6 POOL AND GARDEN
g, + 1 PARKPLATZ	g, + 1 PARKING SPOT

# APARTMENT TOP 2 - 1. FLOOR "HOUSE M" - WHITE

## RASPORED PROSTORA - TOP 2 / M



### ZAJEDNIČKI PROSTORI:

1. STUBIŠTE	kamen	12.16m <sup>2</sup>	
<b>STAN 2:</b>			
2. HODNIK	keramika	3.77m <sup>2</sup>	
3. KUPAONICA	keramika	3.22m <sup>2</sup>	
4. DJEČJA SOBA	parket	10.54m <sup>2</sup>	
5. DNEVNI BORAVAK	parket	23.84m <sup>2</sup>	
6. KUHINJA	keramika	8.19m <sup>2</sup>	
7. LOGGIA	keramika	5.08m <sup>2</sup>	*0.75
8. PREDSOBLJE	parket	1.54m <sup>2</sup>	
9. KUPAONICA	keramika	6.50m <sup>2</sup>	
10. SPAVAĆA SOBA	parket	10.53m <sup>2</sup>	*0.75
11. TERASA	keramika	6.28m <sup>2</sup>	*0.50

a, UKUPNO STAN TOP 2 / M:	85.87m <sup>2</sup>
b, KORISNO STAN TOP 2 / M:	79.87m <sup>2</sup>
c, KORISNO ZAJEDNIČKI PROSTORI:	12.16m <sup>2</sup>
d, KANTINA TOP 2 / M:	22.71m <sup>2</sup>

e, SVE UKUPNO: 114.74m<sup>2</sup>

Netto korisne površine umanjene su za 3

§ prema HRN U.C2 100.

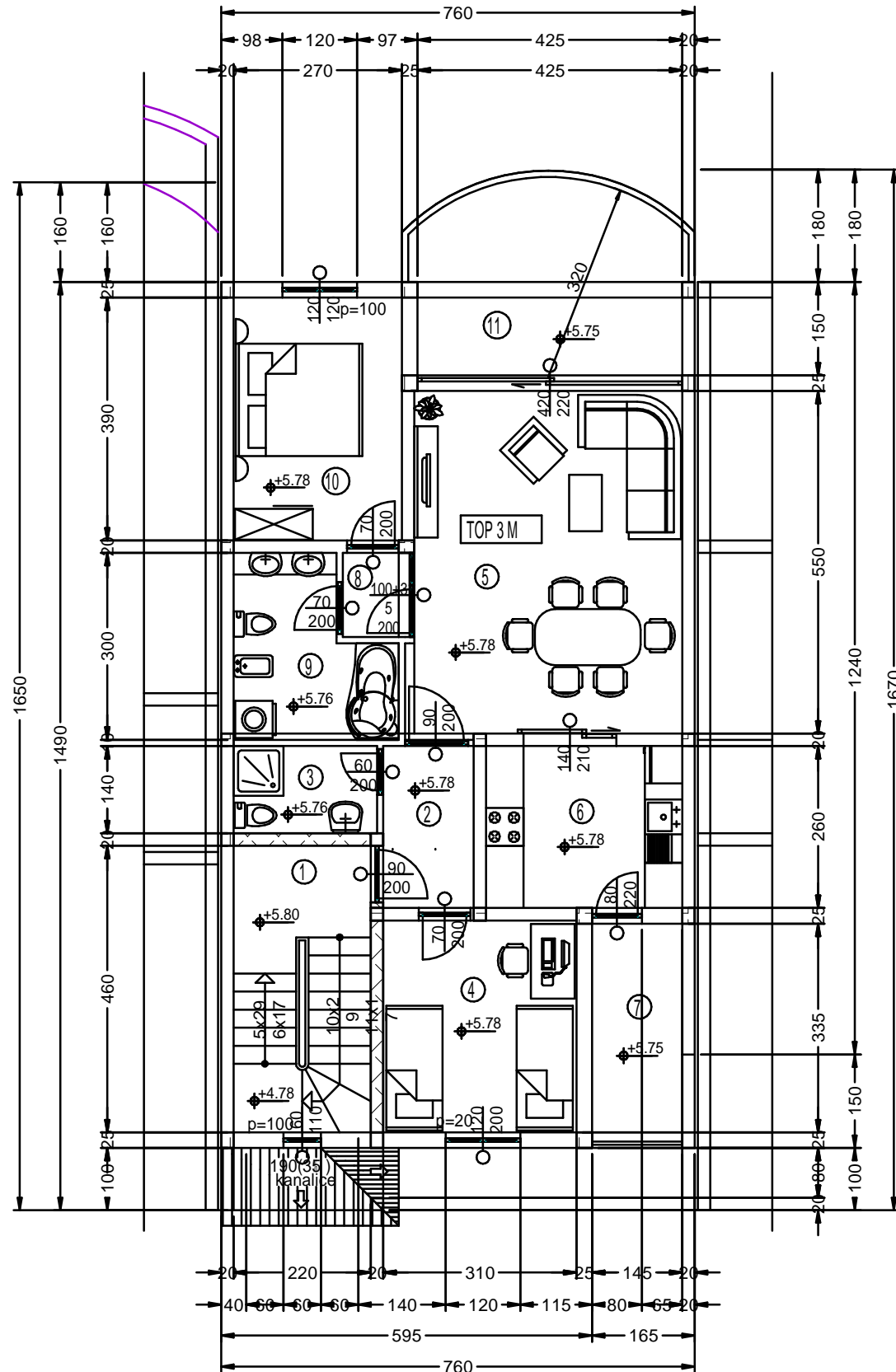
f, + 1/6 BAZEN I VRT  
g, + 1 PARKIRNO MJESTO

**Σ: 208.584,- €**

1. STIEGENHAUS	1. STAIRCASE
2. VORZIMMER	2. HALL
3. BAD	3. BATH
4. KINDERZIMMER	4. ROOM
5. WOHNZIMMER	5. LIVING ROOM
6. KÜCHE	6. KITCHEN
7. LOGGIA	7. LOGGIA
8. VORRAUM	8. VESTIBULE
9. BAD	9. BATH
10. SCHLAFZIMMER	10. BEDROOM
11. TERRASSE	11. TERRACE
a, GESAMMTFLÄCHE TOP 2 / M	a, TOTAL AREA TOP 2 / M
b, NETTO FLÄCHE TOP 2 / M	b, NETTO TOTAL AREA TOP 2 / M
c, ALLGEMEINFLÄCHE NETTO	c, NETTO COMMON AREA
d, KELLER TOP 2 / M	d, BASEMENT TOP 2 / M
e, GESAMMTFLÄCHE	e, TOTAL AREA
f, + 1/6 POOL UND GARTEN	f, + 1/6 POOL AND GARDEN
g, + 1 PARKPLATZ	g, + 1 PARKING SPOT

# APARTMENT TOP 3 - 2. FLOOR "HOUSE M" - GREY

## RASPORED PROSTORA - TOP 3 / M



### ZAJEDNIČKI PROSTORI:

1. STUBIŠTE	kamen	3.81m <sup>2</sup>
<b>STAN 3:</b>		
2. HODNIK	keramika	3.77m <sup>2</sup>
3. KUPAONICA	keramika	3.22m <sup>2</sup>
4. DJEČJA SOBA	parket	10.54m <sup>2</sup>
5. DNEVNI BORAVAK	parket	23.84m <sup>2</sup>
6. KUHNINJA	keramika	8.19m <sup>2</sup>
7. LOGGIA	keramika	3.56m <sup>2</sup>
		*0.75
		*0.25
8. PREDSOBLJE	parket	1.54m <sup>2</sup>
9. KUPAONICA	keramika	6.50m <sup>2</sup>
10. SPAVAČA SOBA	parket	10.53m <sup>2</sup>
	keramika	6.38m <sup>2</sup>
		*0.75
11. TERASA		6.28m <sup>2</sup>
		*0.50

a, UKUPNO STAN TOP 3 / M:	85.87m <sup>2</sup>
b, KORISNO STAN TOP 3 / M:	77.62m <sup>2</sup>
c, UKUPNO GALERIJA TOP 3 / M:	36.09m <sup>2</sup>
d, UKUPNO TOP 3 / M:	113.71m <sup>2</sup>
e, KORISNO ZAJEDNIČKI PROSTORI:	17.32m <sup>2</sup>
f, KANTINA TOP 3 / M:	25.09m <sup>2</sup>

g, SVE UKUPNO: 156.12m<sup>2</sup>

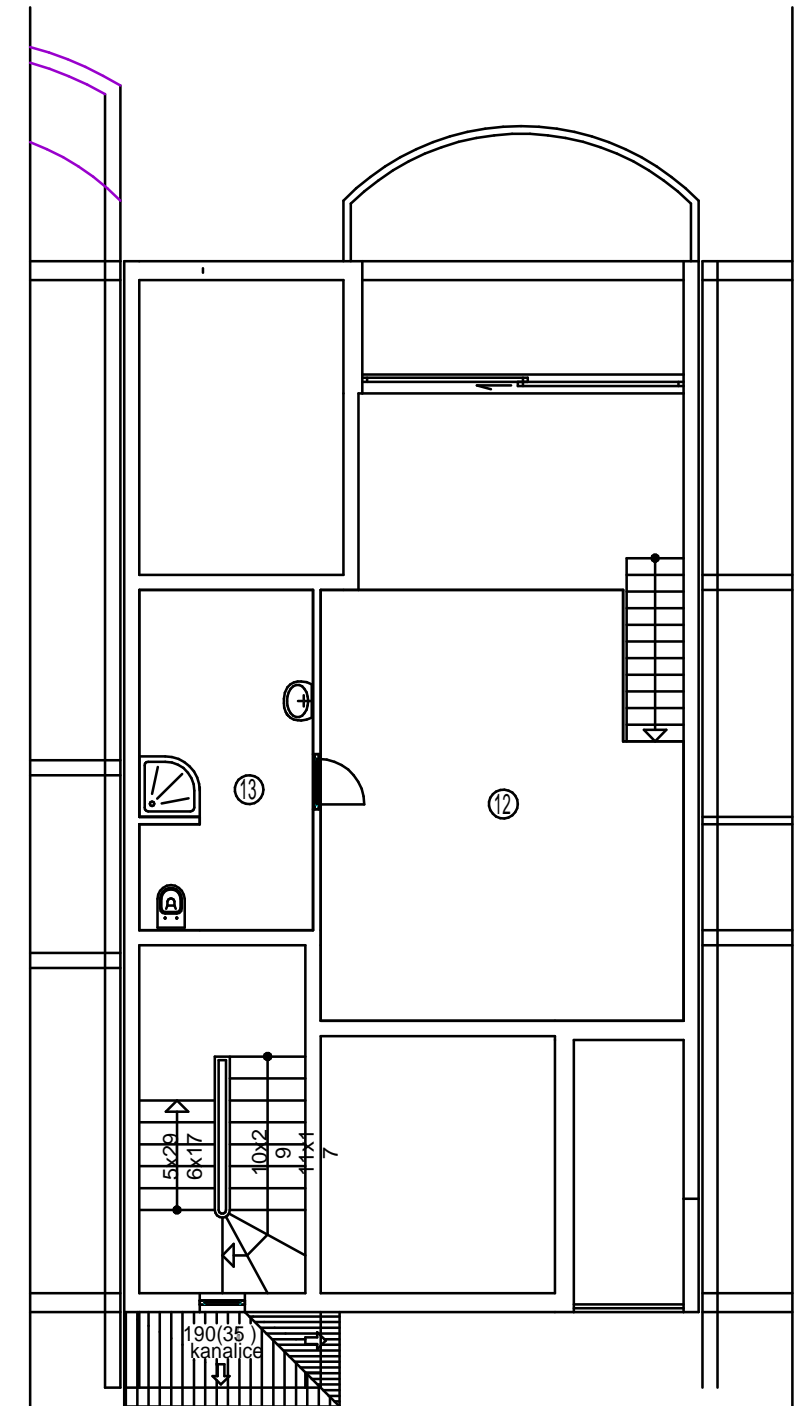
Netto korisne površine umanjene su za 3

prema HRN U.C2 100.

h, + 1/6 BAZEN I VRT  
i, + 1 PARKIRNO MJESTO

Σ: 274.792,- €

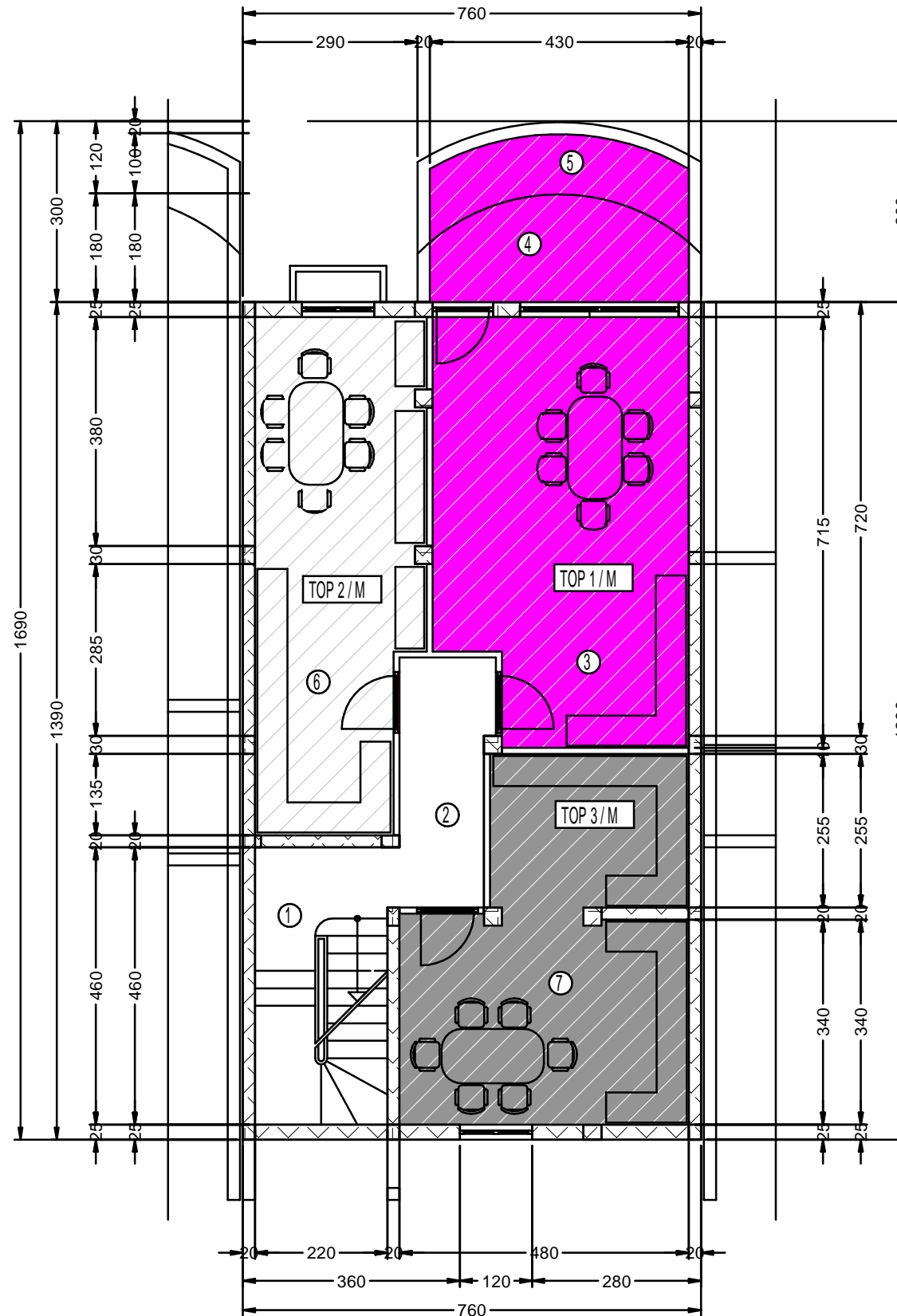
1. STIEGENHAUS	1. STAIRCASE
2. VORZIMMER	2. HALL
3. BAD	3. BATH
4. KINDERZIMMER	4. ROOM
5. WOHNZIMMER	5. LIVING ROOM
6. KÜCHE	6. KITCHEN
7. LOGGIA	7. LOGGIA
8. VORRAUM	8. VESTIBULE
9. BAD	9. BATH
10. SCHLAFZIMMER	10. BEDROOM
11. TERRASSE	11. TERRACE
a, WOHNUNG TOP 3 / M	a, TOTAL AREA FLAT TOP 3 / M
b, WOHNUNG TOP 3 / M NETTO	b, NETTO TOTAL AREA FLAT TOP 3 / M
c, GALLERIE TOP 3 / M	c, TOTAL AREA GALLERY TOP 3 / M
d, GESAMMTFLÄCHE TOP 3 / M NETTO	d, NETTO TOTAL AREA TOP 3 / M
e, ALLGEMEINFLÄCHE NETTO	e, NETTO COMMON AREA
f, KELLER TOP 3 / M	f, BASEMENT TOP 3 / M
e, GESAMMTFLÄCHE	e, TOTAL AREA
f, + 1/6 POOL UND GARTEN	f, + 1/6 POOL AND GARDEN
g, + 1 PARKPLATZ	g, + 1 PARKING SPOT



### GALERIJA TOP 3 / M

12. GALERIJA	26.04m <sup>2</sup>
13. KUPAONICA	10.05m <sup>2</sup>
c, UKUPNO GALERIJA:	36.09 m <sup>2</sup>
12. GALERIE	12. GALLERY
13. BAD	13. BATH

# BASEMENT "HOUSE M"



## RASPORED PROSTORA - KANTINA "KUĆA M"

### ZAJEDNIČKI PROSTORI:

1. STUBIŠTE	kamen	10.12m <sup>2</sup>	
2. HODNIK	keramika	6.27m <sup>2</sup>	
<b>TOP 1 / M:</b>			
3. SPREMIŠTE	keramika	28.55m <sup>2</sup>	
4. NATKRIVENA TERASA	kamen	6.58m <sup>2</sup>	*0.50
5. NENATKRIVENA TERASA	kamen	4.58m <sup>2</sup>	*0.25
<b>TOP 2 / M:</b>			
6. SPREMIŠTE	keramika	22.71m <sup>2</sup>	
<b>TOP 3 / M:</b>			
7. SPREMIŠTE	keramika	25.09m <sup>2</sup>	

a, UKUPNO ZAJEDNIČKI PROSTORI:	16.39m <sup>2</sup>
b, KORISNO ZAJEDNIČKI PROSTORI:	16.39m <sup>2</sup>
c, UKUPNO KANTINA TOP 1 / M:	39.71m <sup>2</sup>
d, KORISNO KANTINA TOP 1 / M:	32.99m <sup>2</sup>
e, UKUPNO KANTINA TOP 2 / M:	22.71m <sup>2</sup>
f, KORISNO KANTINA TOP 2 / M:	22.71m <sup>2</sup>
g, UKUPNO KANTINA TOP 3 / M:	25.09m <sup>2</sup>
h, KORISNO KANTINA TOP 3 / M:	25.09m <sup>2</sup>

i, SVE UKUPNO:	103.90m <sup>2</sup>
j, SVE UKUPNO KORISNO:	97.18m <sup>2</sup>

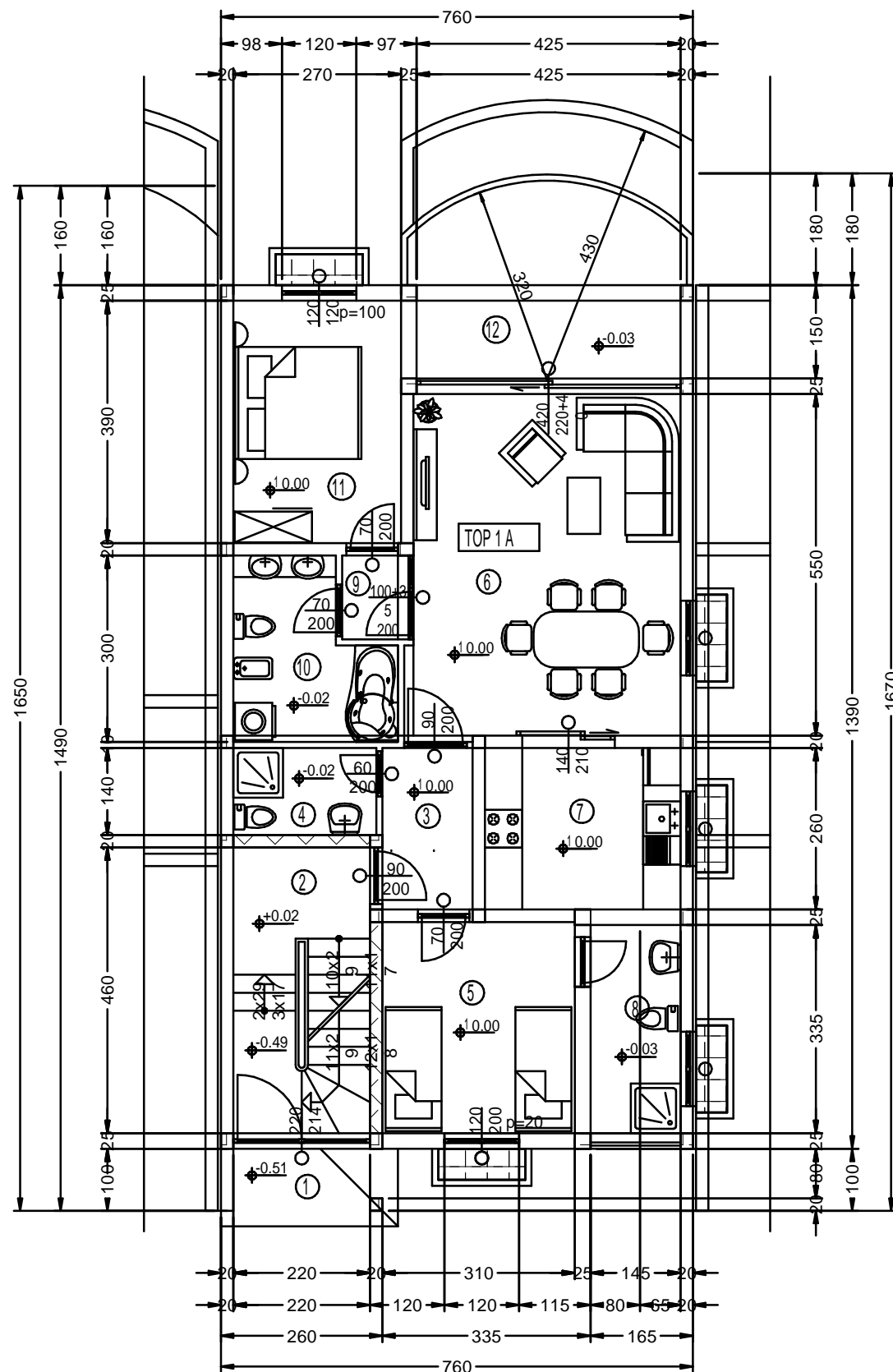
Netto korisne površine umanjene su za 3

§ prema HRN U.C2 100.

1. STIEGE	1. STAIRCASE
2. VORRAUM	2. VESTIBULE
3. STIEGE TOP 1 / M	3. STAIRCASE TOP 1 / M
4. TERRASSE ÜBERDACHT	4. COVERED TERRACE
5. TERRASSE NICHT ÜBERDACHT	5. UNCOVERED TERRACE
6. STIEGE TOP 2 / M	6. STAIRCASE TOP 2 / M
7. STIEGE TOP 3 / M	7. STAIRCASE TOP 3 / M
a, ALLGEMEINFLÄCHE	a, COMMON AREA
b, ALLGEMEINFLÄCHE NETTO	b, COMMON AREA NETTO
c, KELLER TOP 1 / M	c, BASEMENT TOP 1 / M
d, KELLER NETTO TOP 1 / M	d, BASEMENT NETTO TOP 1 / M
e, KELLER TOP 2 / M	e, BASEMENT TOP 2 / M
f, KELLER NETTO TOP 2 / M	f, BASEMENT NETTO TOP 2 / M
g, KELLER TOP 3 / M	g, BASEMENT TOP 3 / M
h, KELLER NETTO TOP 3 / M	h, BASEMENT NETTO TOP 3 / M
i, GESAMMTFLÄCHE	i, TOTAL AREA
j, GESAMMTFLÄCHE NETTO	j, TOTAL AREA NETTO

# APARTMENT TOP 1 - GROUND FLOOR "HOUSE A" - GREEN

## RASPORED PROSTORA - TOP 1 / A



### ZAJEDNIČKI PROSTORI:

1. NATKRIVENI ULAZ	kamen	2.40m <sup>2</sup>	*0.50
2. STUBIŠTE	kamen	11.03m <sup>2</sup>	

### STAN 1:

3. HODNIK	keramika	3.77m <sup>2</sup>	
4. KUPAONICA	keramika	3.22m <sup>2</sup>	
5. DJEČJA SOBA	parket	10.54m <sup>2</sup>	
6. DNEVNI BORAVAK	parket	23.59m <sup>2</sup>	
7. KUHINJA	keramika	8.06m <sup>2</sup>	
8. KUPAONICA	keramika	4.86m <sup>2</sup>	
9. PREDSOBLJE	parket	1.54m <sup>2</sup>	
10. KUPAONICA	keramika	6.50m <sup>2</sup>	
11. SPAVAĆA SOBA	parket	10.53m <sup>2</sup>	
12. TERASA	keramika	6.30m <sup>2</sup>	*0.75
		6.28m <sup>2</sup>	*0.50

a. UKUPNO STAN TOP 1 / A:	85.19m <sup>2</sup>
b. KORISNO STAN TOP 1 / A:	80.48m <sup>2</sup>

c. KORISNO ZAJEDNIČKI PROSTORI:	12.23m <sup>2</sup>
d. KANTINA TOP 1 / A:	32.63m <sup>2</sup>

e. SVE UKUPNO:	125.34m <sup>2</sup>
----------------	----------------------

Netto korisne površine umanjene su za 3  $\frac{1}{2}$  prema HRN U.C2 100.

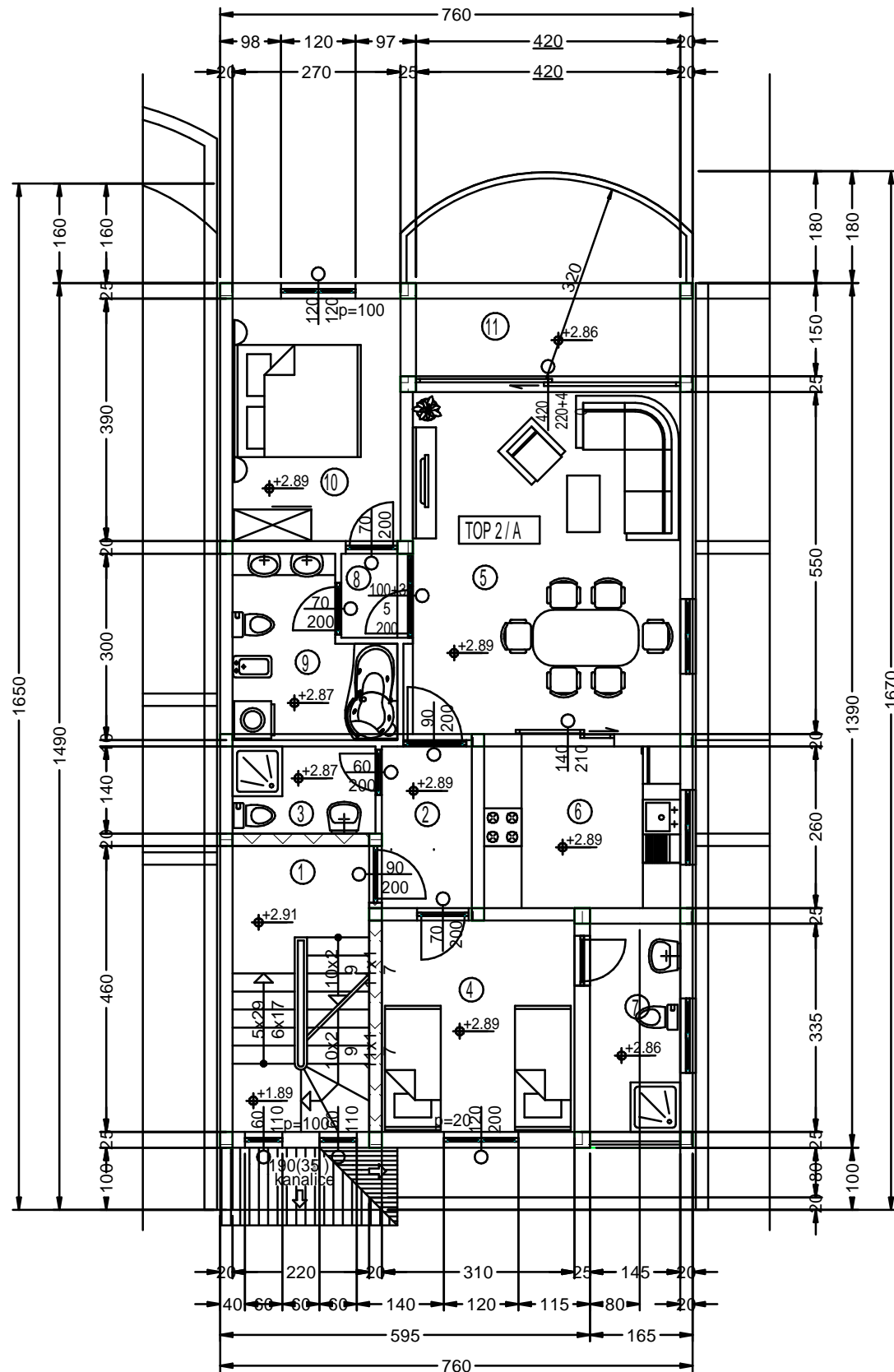
f. + 1/6 BAZEN I VRT  
g. + 1 PARKIRNO MJESTO

**Σ: 225.554,- €**

1. HAUPTINGANG	1. MAIN ENTRANCE
2. STIEGENHAUS	2. STAIRCASE
3. VORZIMMER	3. HALL
4. BAD	4. BATH
5. KINDERZIMMER	5. ROOM
6. WOHNZIMMER	6. LIVING ROOM
7. KÜCHE	7. KITCHEN
8. BAD	8. BATH
9. VORRAUM	9. VESTIBULE
10. BAD	10. BATH
11. SCHLAFZIMMER	11. BEDROOM
12. TERRASSE	12. TERRACE
a. GESAMMTFLÄCHE TOP 1 / A	a. TOTAL AREA TOP 1 / A
b. NETTO FLÄCHE TOP 1 / A	b. NETTO TOTAL AREA TOP 1 / A
c. ALLGEMEINFLÄCHE NETTO	c. NETTO COMMON AREA
d. KELLER TOP 1 / A	d. BASEMENT TOP 1 / A
e. GESAMMTFLÄCHE	e. TOTAL AREA
f. + 1/6 POOL UND GARTEN	f. + 1/6 POOL AND GARDEN
g. + 1 PARKPLATZ	g. + 1 PARKING SPOT

# APARTMENT TOP 2 - 1. FLOOR "HOUSE A" - SAND

## RASPORED PROSTORA - TOP 2 / A



ZAJEDNIČKI PROSTORI:		
1. STUBIŠTE	kamen	12.23m <sup>2</sup>
STAN 2:		
2. HODNIK	keramika	3.77m <sup>2</sup>
3. KUPAONICA	keramika	3.22m <sup>2</sup>
4. DJEČJA SOBA	parket	10.54m <sup>2</sup>
5. DNEVNI BORAVAK	parket	23.59m <sup>2</sup>
6. KUHINJA	keramika	8.06m <sup>2</sup>
7. KUPAONICA	keramika	4.86m <sup>2</sup>
8. PREDSOBLJE	parket	1.54m <sup>2</sup>
9. KUPAONICA	keramika	6.50m <sup>2</sup>
10. SPAVAĆA SOBA	keramika	6.30m <sup>2</sup> *0.75
11. TERASA	keramika	6.28m <sup>2</sup> *0.50

a, UKUPNO STAN TOP 2 / A:	85.19m <sup>2</sup>
b, KORISNO STAN TOP 2 / A:	80.48m <sup>2</sup>

c, KORISNO ZAJEDNIČKI PROSTORI:	12.23m <sup>2</sup>
d, KANTINA TOP 2 / A:	22.71m <sup>2</sup>

e, SVE UKUPNO:	115.42m <sup>2</sup>
----------------	----------------------

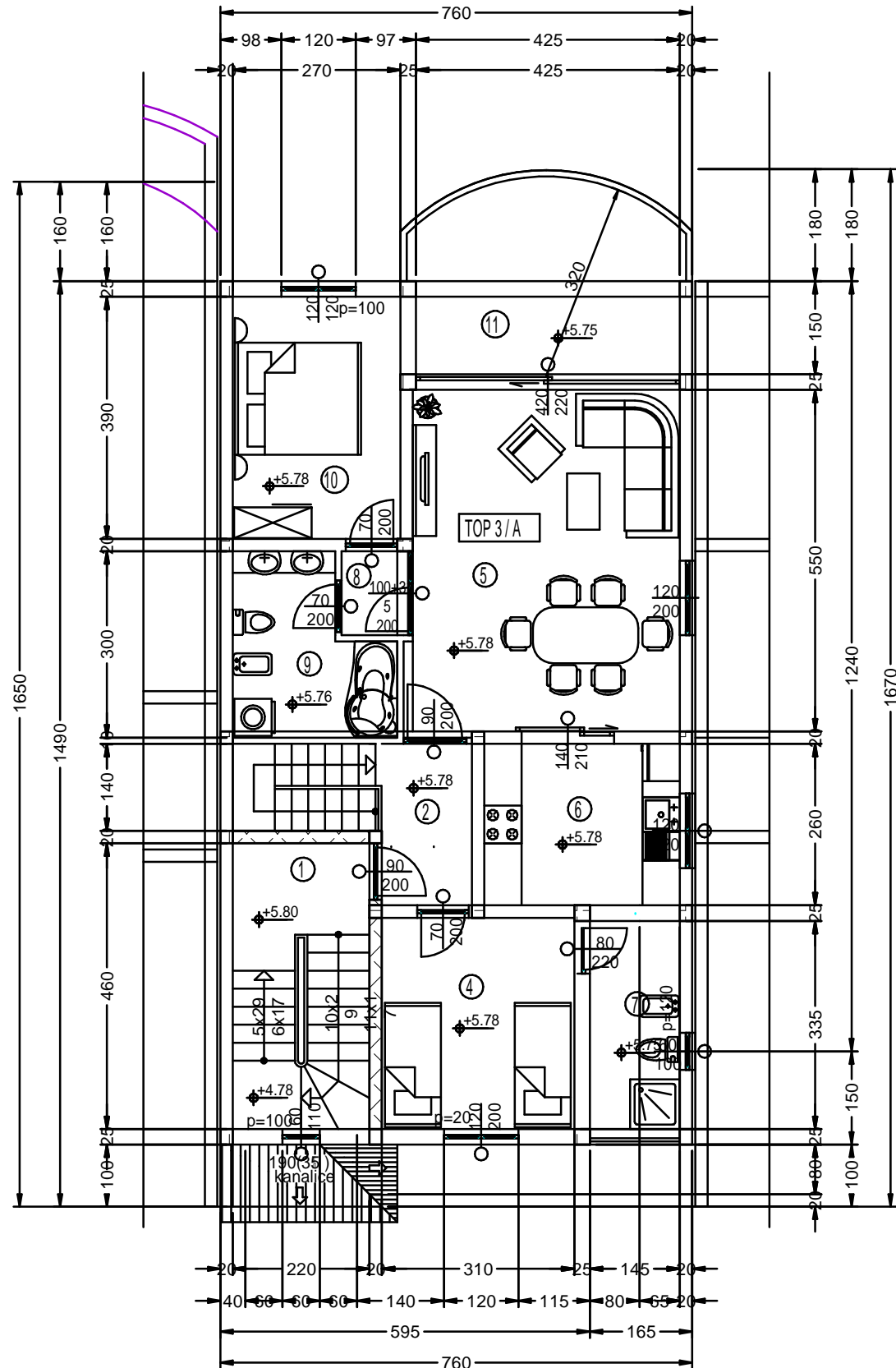
Netto korisne površine umanjene su za 3 † prema HRN U.C2 100.

f, + 1/6 BAZEN I VRT	<b>Σ: 209.672,- €</b>
g, + 1 PARKIRNO MJESTO	

1. STIEGENHAUS	1. STAIRCASE
2. VORZIMMER	2. HALL
3. BAD	3. BATH
4. KINDERZIMMER	4. ROOM
5. WOHNZIMMER	5. LIVING ROOM
6. KÜCHE	6. KITCHEN
7. BAD	7. BATH
8. VORRAUM	8. VESTIBULE
9. BAD	9. BATH
10. SCHLAFZIMMER	10. BEDROOM
11. TERRASSE	11. TERRACE
a, GESAMMTFLÄCHE TOP 2 / A	a, TOTAL AREA TOP 2 / A
b, NETTO FLÄCHE TOP 2 / A	b, NETTO TOTAL AREA TOP 2 / A
c, ALLGEMEINFLÄCHE NETTO	c, NETTO COMMON AREA
d, KELLER TOP 2 / A	d, BASEMENT TOP 2 / A
e, GESAMMTFLÄCHE	e, TOTAL AREA
f, + 1/6 POOL UND GARTEN	f, + 1/6 POOL AND GARDEN
g, + 1 PARKPLATZ	g, + 1 PARKING SPOT

# APARTMENT TOP 3 - 2. FLOOR "HOUSE A" - BLUE

## RASPORED PROSTORA - TOP 3 / A



### ZAJEDNIČKI PROSTORI:

1. STUBIŠTE	kamen	17,18m <sup>2</sup>	
<b>STAN 3:</b>			
2. HODNIK	keramika	3,77m <sup>2</sup>	
3. STUBIŠTE	keramika	3,22m <sup>2</sup>	
4. DJEČJA SOBA	parket	10,54m <sup>2</sup>	
5. DNEVNI BORAVAK	parket	23,59m <sup>2</sup>	
6. KUHINJA	keramika	8,06m <sup>2</sup>	
7. KUPAONICA	keramika	4,86m <sup>2</sup>	
8. PREDSOBLJE	parket	1,54m <sup>2</sup>	
9. KUPAONICA	keramika	6,50m <sup>2</sup>	
10. SPAVAČA SOBA	parket	10,53m <sup>2</sup>	*0.75
11. TERASA	keramika	6,30m <sup>2</sup>	*0.50

a, UKUPNO STAN TOP 3 / A:	85,19m <sup>2</sup>
b, KORISNO STAN TOP 3 / A:	78,91m <sup>2</sup>
c, UKUPNO GALERIJA TOP 3 / A:	34,09m <sup>2</sup>
d, UKUPNO TOP 3 / A:	113,00m <sup>2</sup>
e, KORISNO ZAJEDNIČKI PROSTORI:	17,32m <sup>2</sup>
f, KANTINA TOP 3 / A:	24,65m <sup>2</sup>

g, SVE UKUPNO: 154,83m<sup>2</sup>

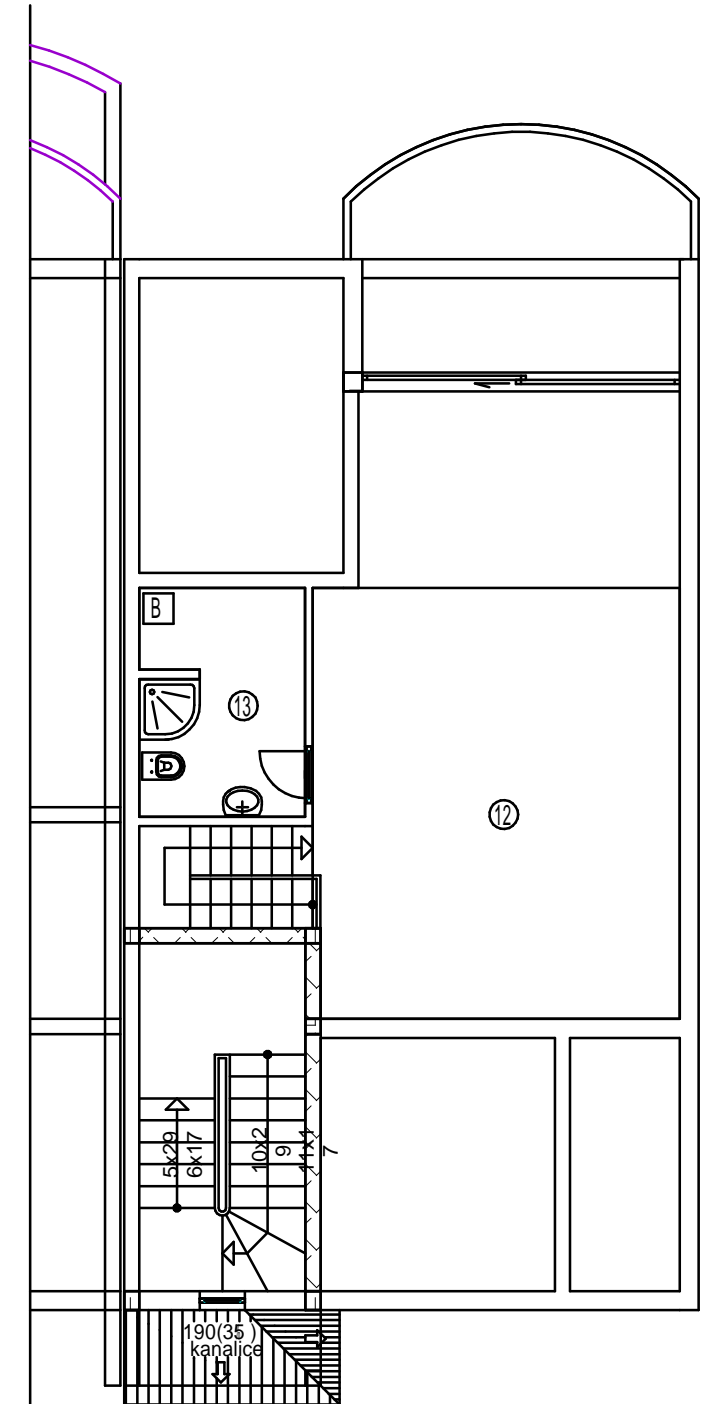
Netto korisne površine umanjene su za 3

prema HRN U.C2 100.

h, + 1/6 BAZEN I VRT  
i, + 1 PARKIRNO MJESTO

Σ: 272.728,- €

1. STIEGENHAUS	1. STAIRCASE
2. VORZIMMER	2. HALL
3. STIEGE	3. STAIR
4. KINDERZIMMER	4. ROOM
5. WOHNZIMMER	5. LIVING ROOM
6. KÜCHE	6. KITCHEN
7. LOGGIA	7. LOGGIA
8. VORRAUM	8. VESTIBULE
9. BAD	9. BATH
10. SCHLAFZIMMER	10. BEDROOM
11. TERRASSE	11. TERRACE
a, WOHNUNG TOP 3 / A	a, TOTAL AREA FLAT TOP 3 / A
b, WOHNUNG TOP 3 / A NETTO	b, NETTO TOTAL AREA FLAT TOP 3 / A
c, GALLERIE TOP 3 / A	c, TOTAL AREA GALLERY TOP / A
d, GESAMMTFLÄCHE TOP 3 / ANETTO	d, NETTO TOTAL AREA TOP 3 / A
e, ALLGEMEINFLÄCHE NETTO	e, NETTO COMMON AREA
f, KELLER TOP 3 / A	f, BASEMENT TOP 3 / A
e, GESAMMTFLÄCHE	e, TOTAL AREA
f, + 1/6 POOL UND GARTEN	f, + 1/6 POOL AND GARDEN
g, + 1 PARKPLATZ	g, + 1 PARKING SPOT

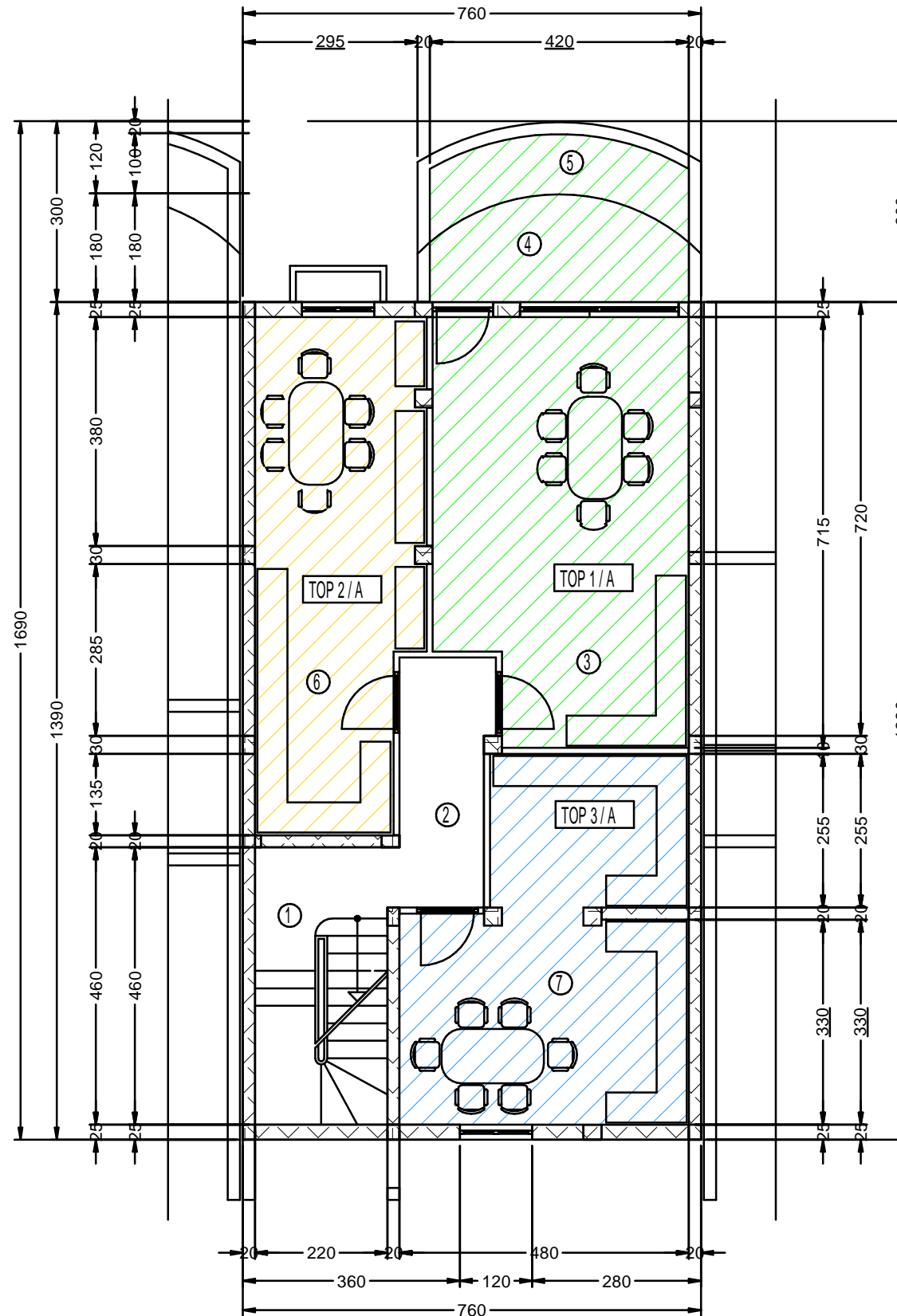


### GALERIJA TOP 3 / A

12. GALERIJA	27,55m <sup>2</sup>
13. KUPAONICA	6,54m <sup>2</sup>
c, UKUPNO GALERIJA:	34,09 m <sup>2</sup>
12. GALERIE	12. GALLERY
13. BAD	13. BATH



# BASEMENT "HOUSE A"



## RASPORED PROSTORA - KANTINA "KUĆA A"

### ZAJEDNIČKI PROSTORI:

1. STUBIŠTE	kamen	10.12m <sup>2</sup>	
2. HODNIK	keramika	6.27m <sup>2</sup>	
<b>TOP 1 / M:</b>			
3. SPREMIŠTE	keramika	28.19m <sup>2</sup>	
4. NATKRIVENA TERASA	kamen	6.58m <sup>2</sup>	*0.50
5. NENATKRIVENA TERASA	kamen	4.58m <sup>2</sup>	*0.25
<b>TOP 2 / M:</b>			
6. SPREMIŠTE	keramika	22.71m <sup>2</sup>	
<b>TOP 3 / M:</b>			
7. SPREMIŠTE	keramika	24.64m <sup>2</sup>	

a, UKUPNO ZAJEDNIČKI PROSTORI:	16.39m <sup>2</sup>
b, KORISNO ZAJEDNIČKI PROSTORI:	16.39m <sup>2</sup>
c, UKUPNO KANTINA TOP 1 / A:	39.35m <sup>2</sup>
d, KORISNO KANTINA TOP 1 / A:	32.63m <sup>2</sup>
e, UKUPNO KANTINA TOP 2 / A:	22.71m <sup>2</sup>
f, KORISNO KANTINA TOP 2 / A:	22.71m <sup>2</sup>
g, UKUPNO KANTINA TOP 3 / A:	24.65m <sup>2</sup>
h, KORISNO KANTINA TOP 3 / A:	24.65m <sup>2</sup>

i, SVE UKUPNO:	103.10m <sup>2</sup>
j, SVE UKUPNO KORISNO:	96.38m <sup>2</sup>

Netto korisne površine umanjene su za 3

§ prema HRN U.C2 100.

1. STIEGE	1. STAIRCASE
2. VORRAUM	2. VESTIBULE
3. STIEGE TOP 1 / A	3. STAIRCASE TOP 1 / A
4. TERRASSE ÜBERDACHT	4. COVERED TERRACE
5. TERRASSE NICHT ÜBERDACHT	5. UNCOVERED TERRACE
6. STIEGE TOP 2 / A	6. STAIRCASE TOP 2 / A
7. STIEGE TOP 3 / A	7. STAIRCASE TOP 3 / A
a, ALLGEMEINFLÄCHE	a, COMMON AREA
b, ALLGEMEINFLÄCHE NETTO	b, COMMON AREA NETTO
c, KELLER TOP 1 / A	c, BASEMENT TOP 1 / A
d, KELLER NETTO TOP 1 / A	d, BASEMENT NETTO TOP 1 / A
e, KELLER TOP 2 / A	e, BASEMENT TOP 2 / A
f, KELLER NETTO TOP 2 / A	f, BASEMENT NETTO TOP 2 / A
g, KELLER TOP 3 / A	g, BASEMENT TOP 3 / A
h, KELLER NETTO TOP 3 / A	h, BASEMENT NETTO TOP 3 / A
i, GESAMMTFLÄCHE	i, TOTAL AREA
j, GESAMMTFLÄCHE NETTO	j, TOTAL AREA NETTO